





SKU: APL

-  Open and Closed position monitoring
-  Offene und geschlossene Positionsüberwachung
-  Control de la posición abierta y cerrada
-  Suivi ouvert et fermé la position

APL 210-220 Series - Standard Compact
APL 310-320 Series - Heavy Duty
APL 510-520 Series - Ex and I.S



APL Series position monitoring switch boxes are a rotary type position indicator designed to integrate valve and pneumatic actuator with a variety of internal switches or sensors. They are specially designed to be suitable for small size pneumatic actuators, offering mechanical low cost single pole double throw plated contact switching with an operating life of 100,000 cycles. The proximity switches are hermetically sealed inductive sensors are suitable for computer input circuits and general purpose applications an operating life of 5 million cycles

Valves™
ONLINE

APL Series of Switchbox



Description

Our APL Series switchboxes offer you outstanding quality and service in addition to remaining the most competitive prices in the UK market. From the entry level APL2 series aluminium box, to the high end APL5 series we can supply complete solutions for any switchbox application.



Beschreibung

Unsere Schaltkästen APL Series bieten Ihnen hervorragende Qualität und Service zusätzlich zum Rest die konkurrenzfähigsten Preise auf dem britischen Markt . Vom APL2 Serie Alu-Box Einsteiger , auf die High-End- Serie APL5 können wir Komplettlösungen für jede Anwendung liefern Schaltkästen .







Descripción

Nuestras cajas de distribución de la Serie APL le ofrecen una excelente calidad y servicio además de permanecer los precios más competitivos en el mercado británico . En el cuadro de aluminio de la serie APL2 nivel de entrada, a la serie de gama alta APL5 podemos suministrar soluciones completas para cualquier aplicación de interruptores .



description

Nos armoires de commande APL Series vous offrent la qualité et un service exceptionnel en plus de rester les prix les plus compétitifs sur le marché britannique . Dans la boîte d'aluminium de série APL2 d'entrée de gamme , à la série de APL5 haut de gamme , nous pouvons fournir des solutions complètes pour toutes les applications de l'armoire électrique .

-  Open and Closed position monitoring
-  Offene und geschlossene Positionsüberwachung
-  Control de la posición abierta y cerrada
-  Suivi ouvert et fermé la position

Position switchbox



The APL Series of limit switches feature high quality and easy to use multiple option switch boxes for manual valves and rotary actuators. Die cast aluminium housings are powder coated for corrosion resistance and feature red visual indicators. Quick-set cams and easy access terminal strips offer easy set up. These economical switch boxes offer numerous switch and sensor options for today's process and industrial markets. Ambient temperature range -20°C to 80°C

APL 210 Standard

- IP67 Enclosure
- Beacon indicator
- Stainless steel shaft and mounting bracket
- 2 x SPDT V3 micro switches
- 2 x M20 cable entries
- Simple spring loaded switch adjustment

Options Include

Proximity sensors, IP68, three position indicator, NPT cable entries and alternative colours.

APL310 Switchbox

The APL310 has a larger enclosure than the APL210, giving you all the same standard features while also giving us more flexibility to add optional extras specific to your requirements.

Options Include

Proximity sensors, 4 switches, IP68, three position indicator, NPT cable entries, potentiometer and position transmitter.





APL510 Switchbox

This model shares all the standard features of the APL210 and APL310, but also comes with ATEX Eexd certification. The APL510 can also be supplied with a stainless steel enclosure for corrosive atmospheres, making it suitable for a wide range of demanding applications and environments.

Options Include

316 Stainless steel, proximity sensors, 4 switches, IP68, three position indicator, NPT cable entries, potentiometer and position transmitter.



-  Open and Closed position monitoring
-  Offene und geschlossene Positionsüberwachung
-  Control de la posición abierta y cerrada
-  Suivi ouvert et fermé la position

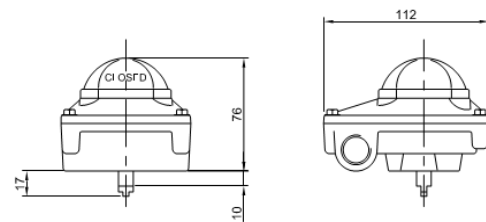
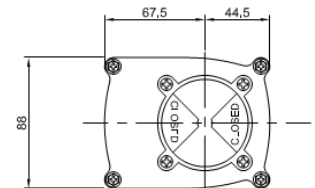
Position switchbox

APL 210 Series – Standard Compact Mechanical Limit Switches

APL 220 Series – Standard Compact Proximity Switches

Bracket Details				
Bracket	A	B	C	Application
MBP-100	80	30	30	80 x 30 x20
MBP-200	80	30	40	80 x 30 x30
MBP-300	130	30	40	130 x 30 x30
MBP-400	130	30	60	130 x 30 x30

Options	
Enclosure Rating	IP67
Enclosure Finish	Various Colours
Proximity Sensors	See Data Sheets
Beacon Indicator	3 Way Indication
ATEX Exed I.S Versions	See Data Sheets



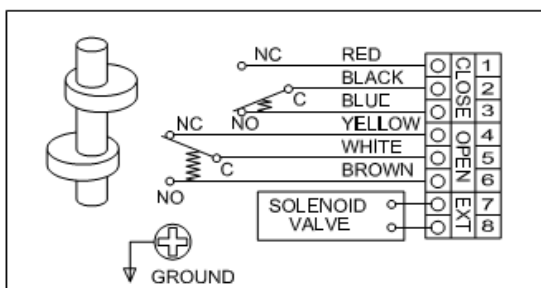
APL 210 Standard with Limit Switches - Mechanical

Description

A powder coated aluminum switchbox to IP67 fitted with 2 x SPDT switches for identification of fully open and fully closed positions. Solid and compact design with high visibility beacon indicator. Captive cover bolts are safely retained during installation and maintenance. The spring loaded splined cams are easily adjustable with no tools required. Dual cable entries are provided. The switchbox is mounted to the actuator Using a Namur stainless steel mounting Bracket.

Standard Specification:

Enclosure Material : Die Cast Aluminium
 Enclosure Rating : IP67
 Enclosure Finish : Polyester Powder Coating (Black)
 Shaft Material : Stainless Steel
 Cable Entries : 2 x M20 (Options PG13.5 & ½" NPT)
 Limit Switch Type : 2 x SPDT, Mechanical
 Voltage / Amps : 250 V AC, 125 V AC, 250 VDC/0.3A, 125 VDC/0.6A, 30 VDC/10A
 Ambient Temperature : -20°C to 80°C



APL 220 Standard with Proximity Switches

Description

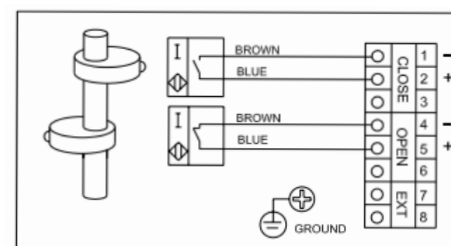
A powder coated aluminum switchbox to IP67 fitted with 2 x 2 wire proximity sensors for identification of fully open and fully closed positions. Solid and compact design with high visibility beacon indicator. Captive cover bolts are safely retained during installation and maintenance. The spring loaded splined cams are easily adjustable with no tools required. Dual cable entries are provided. The switchbox is mounted to the actuator Using a Namur stainless steel mounting Bracket.





Standard Specification:

Enclosure Material : Die Cast Aluminium
 Enclosure Rating : IP67
 Enclosure Finish : Polyester Powder Coating (Black)
 Shaft Material : Stainless Steel
 Cable Entries : 2 x M20 (Options PG13.5 & ½" NPT)
 Sensor Type : 2 x P & F NJ2-V3-N Proximity Sensors
 Sensor Rating : Atex IIG Exeia T6
 Voltage / Amps : 8V DC – 2 Wire
 Ambient Temperature : -20°C to 80°C

Options:

3 way indication



-  Open and Closed position monitoring
-  Offene und geschlossene Positionsüberwachung
-  Control de la posición abierta y cerrada
-  Suivi ouvert et fermé la position

Position switchbox

APL 310 Series – Standard Compact Mechanical Limit Switches

APL 320 Series – Standard Compact Proximity Switches

Bracket Details				
Bracket	A	B	C	Application
MBP-100	80	30	30	80 x 30 x20
MBP-200	80	30	40	80 x 30 x30
MBP-300	130	30	40	130 x 30 x30
MBP-400	130	30	60	130 x 30 x30

Options	
Enclosure Rating	IP67
Enclosure Finish	Various Colours
Proximity Sensors	See Data Sheets
Beacon Indicator	3 Way Indication
ATEX Exed I.S Versions	See Data Sheets

APL 310 Standard with Limit Switches - Mechanical

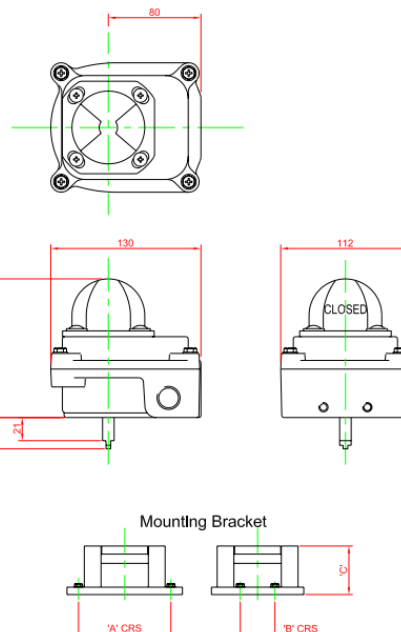
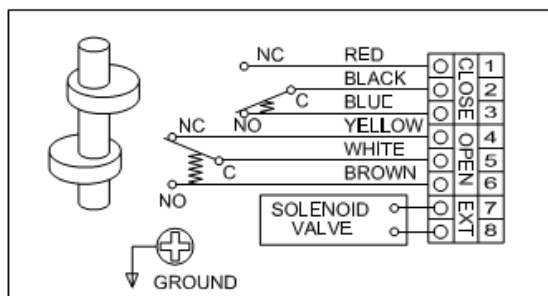
Description

A powder coated aluminum switchbox to IP67 fitted with 2 x SPDT switches for identification of fully open and fully closed positions. Larger design than the APL 2 range, offering more switch options.

Solid and compact design with high visibility beacon indicator. Captive cover bolts are safely retained during installation and maintenance. The spring loaded splined cams are easily adjustable with no tools required. Dual cable entries are provided. The switchbox is mounted to the actuator Using a Namur stainless steel mounting Bracket.

Standard Specification:

Enclosure Material : Die Cast Aluminium
 Enclosure Rating : IP67
 Enclosure Finish : Polyester Powder Coating (Black)
 Shaft Material : Stainless Steel
 Cable Entries : 2 x M20 (Options PG13.5 & ½" NPT)
 Limit Switch Type : 2 x SPDT, Mechanical
 Voltage / Amps : 250 V AC, 125 V AC, 250 VDC/0.3A, 125 VDC/0.6A, 30 VDC/10A
 Ambient Temperature : -20°C to 80°C



APL 320 Standard with Proximity Switches

Description

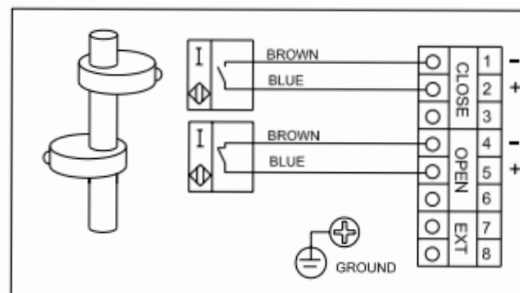
A powder coated aluminum switchbox to IP67 fitted with 2 x 2 wire proximity sensors for identification of fully open and fully closed positions. Larger design than the APL 2 range, offering more switch options. Solid and compact design with high visibility beacon indicator. Captive cover bolts are safely retained during installation and maintenance. The spring loaded splined cams are easily adjustable with no tools required. Dual cable entries are provided. The switchbox is mounted to the actuator Using a Namur stainless steel mounting Bracket.





Standard Specification:

Enclosure Material : Die Cast Aluminium
 Enclosure Rating : IP67
 Enclosure Finish : Polyester Powder Coating (Black)
 Shaft Material : Stainless Steel
 Cable Entries : 2 x M20 (Options PG13.5 & ½" NPT)
 Sensor Type : 2 x P & F NJ2-V3-N Proximity Sensors
 Voltage / Amps : 8V DC – 2 Wire
 Ambient Temperature : -20°C to 80°C

Options:

3 way indication



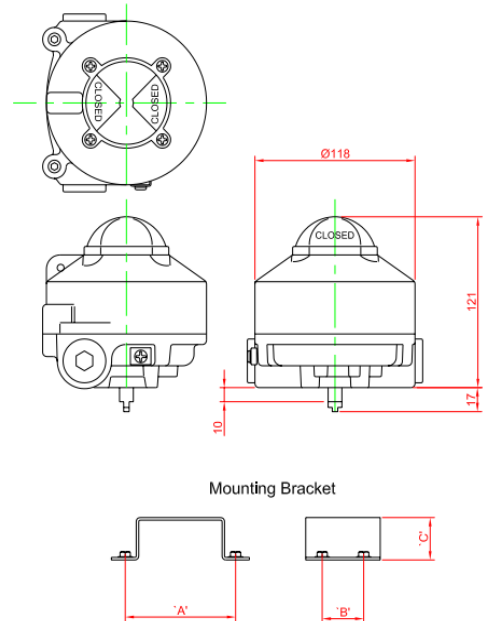
-  Open and Closed position monitoring
-  Offene und geschlossene Positionsüberwachung
-  Control de la posición abierta y cerrada
-  Suivi ouvert et fermé la position

Position switchbox

APL 510 Series – ATEX IIG Ex d IIC T6
Mechanical Limit Switches
APL 520 Series – ATEX IIG Ex d IIC T6
Proximity Switches

Bracket Details				
Bracket	A	B	C	Application
MBP-100	80	30	30	80 x 30 x20
MBP-200	80	30	40	80 x 30 x30
MBP-300	130	30	40	130 x 30 x30

Options	
Enclosure Rating	IP67
Enclosure Finish	Various Colours
Proximity Sensors	See Data Sheets
Beacon Indicator	3 Way Indication
ATEX Eexd I.S Versions	See Data Sheets



APL 510 with ATEX Limit Switches - Mechanical

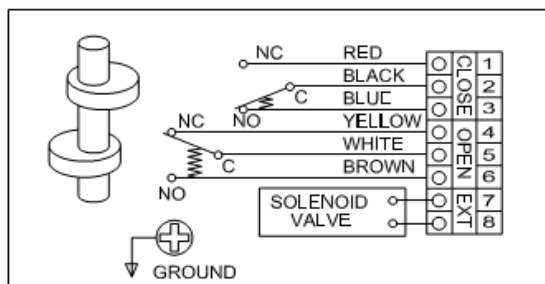


Description

A powder coated aluminum switchbox to ATEX II 2G Ex d IIC T6, IP67 fitted with 2 x SPDT switches for identification of fully open and fully closed positions. Solid and compact design with high visibility beacon indicator. Captive cover bolts are safely retained during installation and maintenance. The spring loaded splined cams are easily adjustable with no tools required. Dual cable entries are provided. The switchbox Has a stainless steel output shaft and is mounted to the actuator using a Namur stainless steel mounting bracket.

Standard Specification:

- Enclosure Material : Die Cast Aluminium
- Enclosure Rating : ATEX II 2G Ex d IIC T6 IP67
- Enclosure Finish : Polyester Powder Coating (Black)
- Shaft Material : Stainless Steel
- Cable Entries : 2 x M20 (Options PG13.5, 3/4" NPT & M25)
- Limit Switch Type : 2 x SPDT, Mechanical
- Voltage / Amps : 250V AC/16A, 125 V AC/16A, 250 VDC/0.3A, 125 VDC/0.6A.
- Ambient Temperature : -20°C to 60°C



APL 520 with ATEX Proximity Switches

Description

A powder coated aluminum switchbox to ATEX II 2G Ex d IIC T6, IP67 fitted with 2 x 2 wire proximity sensors for identification of fully open and fully closed positions. Solid and compact design with high visibility beacon indicator. Captive cover bolts are safely retained during installation and maintenance. The spring loaded splined cams are easily adjustable with no tools required. Dual cable entries are provided. The switchbox is mounted to the actuator Using a Namur stainless steel mounting Bracket.

Standard Specification:

- Enclosure Material : Die Cast Aluminium
- Enclosure Rating : ATEX II 2G Ex d IIC T6, IP67
- Enclosure Finish : Polyester Powder Coating (Black)
- Shaft Material : Stainless Steel
- Cable Entries : 2 x M20 (Options PG13.5, M25 & 3/4" NPT)
- Sensor Type : 2 x P & F NJ2-V3-N Proximity Sensors
- Sensor rating : ATEX IIG Eexia IIC T6
- Voltage / Amps : 8V DC – 2 Wire
- Ambient Temperature : -20°C to 60°C

Options:

3 way indication

